



# NEW JERSEY

Nurse-Family Partnership® is an evidence-based, community health program with over 40 years of evidence showing significant improvements in the health and lives of first-time moms and their children living in poverty.

**5x**  
**\$ RETURN**  
EVERY \$1 INVESTED IN NFP SAVES \$5.70 IN FUTURE COSTS FOR THE HIGHEST-RISK FAMILIES SERVED <sup>1</sup>



Nurse-Family Partnership works by having specially trained nurses regularly visit young, first-time moms-to-be, starting early in the pregnancy, continuing through the child's second birthday. Mothers, babies, families and communities all benefit.



## NEW JERSEY MOMS

**20**  
Median age

**87%**  
Unmarried

**94%**  
Clients who used Medicaid while in NFP

**\$7,500**  
Annual household income (median)

\*Medicaid data provided by NSO, includes cumulative data for the state up to 9/2018

**Race**  
33% White  
40% Black or African American  
18% Declined  
4% Multi-racial  
2% Asian or Pacific Islander  
2% American Indian or Alaska Native

\*Aggregate data provided by NSO, includes cumulative data for the state up to 11/2018

**Ethnicity**  
51% Non-Hispanic  
47% Hispanic  
2% Declined

## POSITIVE OUTCOMES FOR NEW JERSEY

\*Aggregate data provided by NSO, includes cumulative state data for New Jersey up to 11/2018; Employment data up to 9/2018.

**89%** BABIES BORN AT A HEALTHY WEIGHT (5.5 LB ≥)

**90%** BABIES BORN FULL TERM

**86%** MOTHERS INITIATED BREASTFEEDING

**95%** BABIES RECEIVED ALL IMMUNIZATIONS BY 24 MONTHS

**59%** OF CLIENTS 18+ WERE EMPLOYED AT 24 MONTHS

## Nurse-Family Partnership Goals

1. Improve pregnancy outcomes by helping women engage in good preventive health practices.
2. Improve child health and development by helping parents provide responsible and competent care; and
3. Improve the economic self-sufficiency of the family by helping parents develop a vision for their own future.



## Proven Results

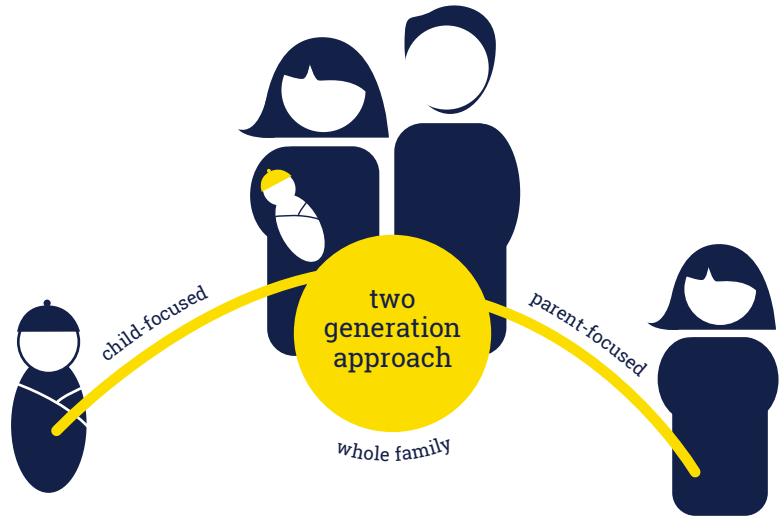
The Nurse-Family Partnership program has been independently reviewed and evaluated, and is ranked as the Gold Standard of home visiting programs. A report from the Center on the Developing Child at Harvard University shows the extent to which very early childhood experiences influence later learning, behavior and health.

**ESTABLISHED: 2002**

**FAMILIES SERVED: 7,937**

**ACTIVE AGENCIES: 9**

**COUNTIES CURRENTLY SERVED: 21**



Jessica Lipper  
732.841.0285

1900 Grant Street, 4th Floor  
Denver, Colorado 80203  
NurseFamilyPartnership.org  
866.864.5226

©2019 Nurse-Family Partnership

“ ”

THERE IS A MAGIC WINDOW DURING PREGNANCY... A TIME WHEN THE DESIRE TO BE A GOOD MOTHER AND RAISE A HEALTHY, HAPPY CHILD CREATES MOTIVATION TO OVERCOME INCREDIBLE OBSTACLES INCLUDING POVERTY WITH THE HELP OF A WELL-TRAINED NURSE.

— DAVID OLDS, PH.D., NURSE-FAMILY PARTNERSHIP'S FOUNDER  
PROFESSOR OF PEDIATRICS AT UNIVERSITY OF COLORADO