



ARKANSAS

Nurse-Family Partnership® is an evidence-based, community health program with over 40 years of evidence showing significant improvements in the health and lives of first-time moms and their children living in poverty.

5x
\$ RETURN
EVERY \$1 INVESTED IN NFP SAVES \$5.70 IN FUTURE COSTS FOR THE HIGHEST-RISK FAMILIES SERVED¹



Nurse-Family Partnership works by having specially trained nurses regularly visit young, first-time moms-to-be, starting early in the pregnancy, continuing through the child's second birthday. Mothers, babies, families and communities all benefit.



ARKANSAS MOMS

20
Median age

93%
Unmarried

94%
Clients who used Medicaid while in NFP

\$10,500
Annual household income (median)

*Medicaid data provided by NSO, includes cumulative data for the state up to 09/2018

Race

- 20% White
- 77% Black or African American
- 1% Declined
- 2% Multi-racial
- 1% Asian or Pacific Islander
- 1% American Indian or Alaska Native

Ethnicity

- 96% Non-Hispanic
- 3% Hispanic
- 1% Declined

*Aggregate data provided by NSO, includes cumulative data for the state up to 11/2018

POSITIVE OUTCOMES FOR ARKANSAS

*Aggregate data provided by NSO, includes cumulative state data for Arkansas up to 11/2018; Employment data up to 9/2018.

85% BABIES BORN AT A HEALTHY WEIGHT (5.5 LB ≥)

88% BABIES BORN FULL TERM

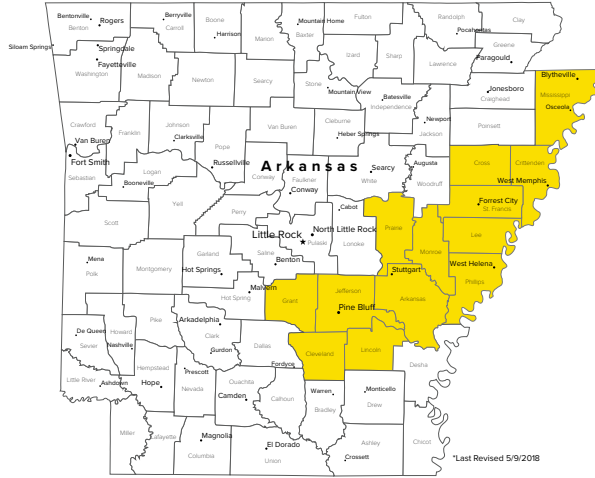
57% MOTHERS INITIATED BREASTFEEDING

99% BABIES RECEIVED ALL IMMUNIZATIONS BY 24 MONTHS

69% OF CLIENTS 18+ WERE EMPLOYED AT 24 MONTHS

Nurse-Family Partnership Goals

1. Improve pregnancy outcomes by helping women engage in good preventive health practices.
2. Improve child health and development by helping parents provide responsible and competent care; and
3. Improve the economic self-sufficiency of the family by helping parents develop a vision for their own future.



Proven Results

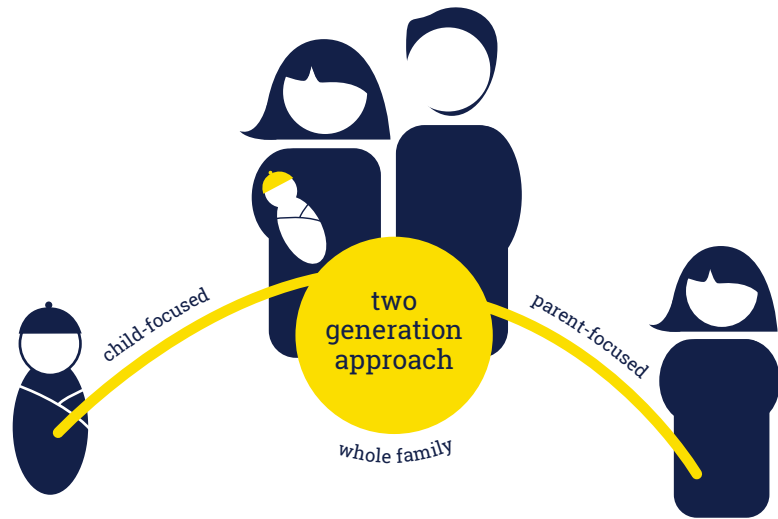
The Nurse-Family Partnership program has been independently reviewed and evaluated, and is ranked as the Gold Standard of home visiting programs. A report from the Center on the Developing Child at Harvard University shows the extent to which very early childhood experiences influence later learning, behavior and health.

ESTABLISHED: 2011

FAMILIES SERVED: 1,048

ACTIVE AGENCIES: 1

COUNTIES CURRENTLY SERVED: 13



Mary Catherine Moffett
504.905.8141

1900 Grant Street, 4th Floor
Denver, Colorado 80203
NurseFamilyPartnership.org
866.864.5226

©2019 Nurse-Family Partnership

“ ”

THERE IS A MAGIC WINDOW DURING PREGNANCY... A TIME WHEN THE DESIRE TO BE A GOOD MOTHER AND RAISE A HEALTHY, HAPPY CHILD CREATES MOTIVATION TO OVERCOME INCREDIBLE OBSTACLES INCLUDING POVERTY WITH THE HELP OF A WELL-TRAINED NURSE.

— DAVID OLDS, PH.D., NURSE-FAMILY PARTNERSHIP'S FOUNDER
PROFESSOR OF PEDIATRICS AT UNIVERSITY OF COLORADO